



**REGIONAL SPECIALISED METEOROLOGICAL CENTRE-TROPICAL CYCLONES, NEW DELHI
TROPICAL WEATHER OUTLOOK**

DEMS-RSMC TROPICAL CYCLONES NEW DELHI DATED 30.07.2023

TROPICAL WEATHER OUTLOOK FOR NORTH INDIAN OCEAN (THE BAY OF BENGAL AND THE ARABIAN SEA) VALID FOR NEXT 168 HOURS ISSUED AT 0600 UTC OF 30.07.2023 BASED ON 0300 UTC OF 30.07.2023.

BAY OF BENGAL:

YESTERDAY'S LOW PRESSURE AREA OVER NORTH ODISHA AND ADJOINING WEST BENGAL COASTS EMERGED INTO HEAD BAY OF BENGAL AND LAY OVER NORTHWEST BAY OF BENGAL AND ADJOINING ODISHA & WEST BENGAL COASTS AT 0300 UTC OF TODAY, THE 30TH JULY, 2023.

LOW LEVEL CIRCULATION (LLC) OVER NORTHWEST BAY OF BENGAL OFF NORTH ODISHA AND ADJOINING GANGETIC WEST BENGAL COASTS & NEIGHBORHOOD. ASSOCIATED BROKEN LOW AND MEDIUM CLOUDS WITH EMBEDDED INTENSE TO VERY INTENSE CONVECTION OVER NORTH ODISHA NORTHWEST BAY OF BENGAL. MINIMUM CLOUD TOP TEMPERATURE IS MINUS 93 DEGREE CELSIUS.

SCATTERED TO BROKEN LOW AND MEDIUM CLOUDS WITH EMBEDDED INTENSE TO VERY INTENSE CONVECTION LAY OVER NORTH & CENTRAL BAY OF BENGAL, NORTH ANDAMAN AND MODERATE TO INTENSE CONVECTION LAY OVER WESTCENTRAL & SOUTHEAST BAY OF BENGAL. SCATTERED LOW AND MEDIUM CLOUDS WITH EMBEDDED ISOLATED WEAK TO MODERATE CONVECTION LAY OVER REST BAY OF BENGAL AND SOUTH ANDAMAN SEA.

PROBABILITY OF CYCLOGENESIS (FORMATION OF DEPRESSION) DURING NEXT 168 HRS:

24 HOURS	24-48 HOURS	48-72 HOURS	72-96 HOURS	96-120 HOURS	120-144 HOURS	144-168 HOURS
NIL	NIL	NIL	NIL	NIL	NIL	NIL

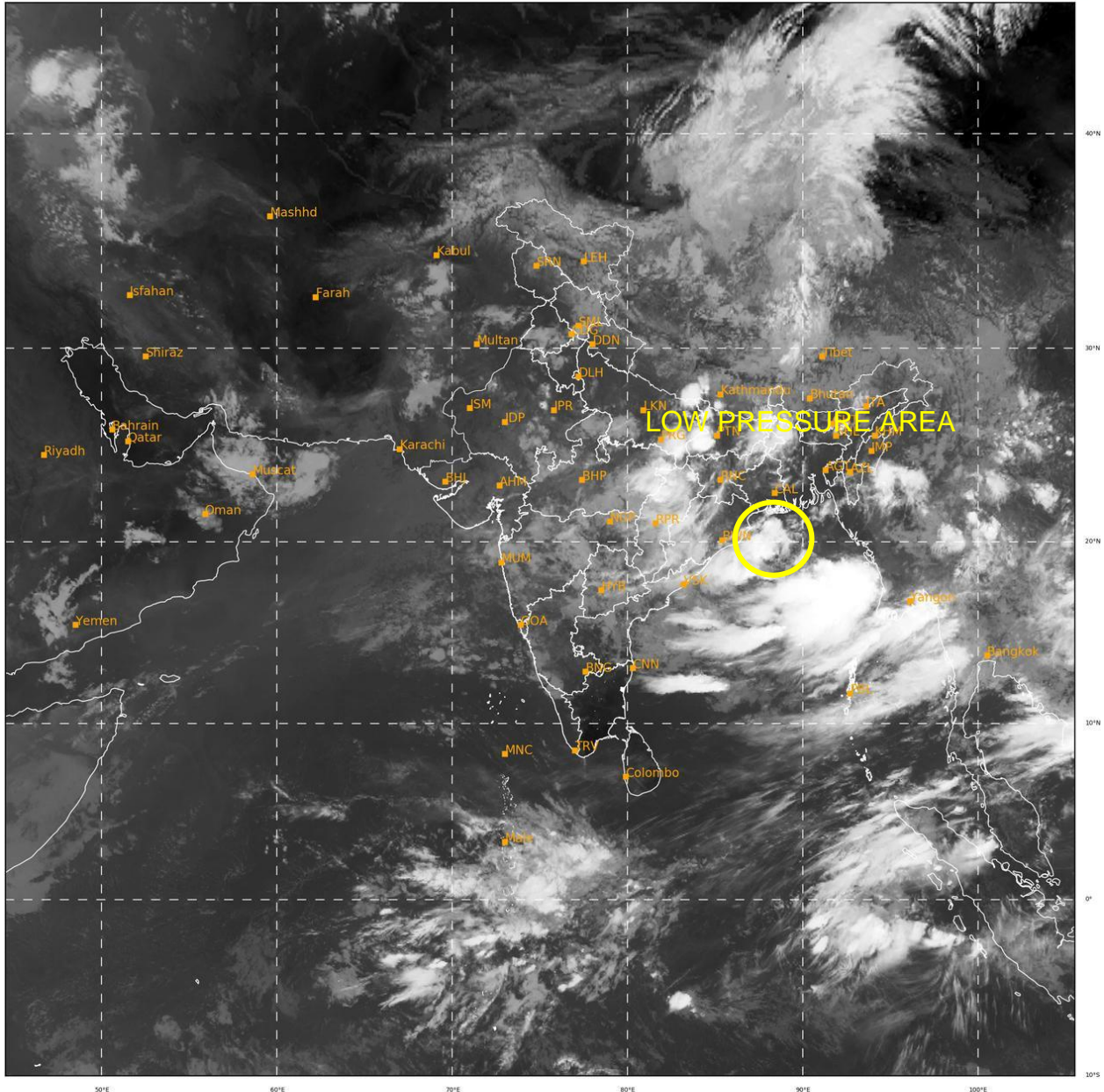
ARABIAN SEA:

SCATTERED LOW AND MEDIUM CLOUDS WITH EMBEDDED ISOLATED WEAK CONVECTION LAY OVER NORTHWEST & EAST ARABIAN SEA.

PROBABILITY OF CYCLOGENESIS (FORMATION OF DEPRESSION) DURING NEXT 168 HRS:

24 HOURS	24-48 HOURS	48-72 HOURS	72-96 HOURS	96-120 HOURS	120-144 HOURS	144-168 HOURS
NIL	NIL	NIL	NIL	NIL	NIL	NIL

REMARKS: NIL



389

941

IMD,DELHI